

Lemvigh-Müller A/S
Nordager 1
DK-6000 Kolding
Denmark

Tel. +45 36 95 50 00
Fax +45 36 95 50 01

Lemvigh Müller A/S
Purchase Order
IDOC: ORDERS.ORDERS05

Indhold

1.	IDOC ORDERS.ORDERS05	3
1.1	Content	3
1.2	Document history	3
1.3	Document Structure	4
1.4	EDI_DC40: Control structure	5
1.5	E1EDK01: General data, header	6
1.6	E1EDKA1: Partner Information, header	6
1.7	E1EDK02: References, header	7
1.8	E1EDKT1: Text identification	8
1.9	E1EDKT1.E1EDKT2: Text lines, header	8
1.10	E1EDP01: General data, position	9
1.11	E1EDP01.E1EDP20: Delivery, position	10
1.12	E1EDP01.E1EDP19: Material, position	10
1.13	E1EDP01: Text identification, position	11
1.14	E1EDPT1.E1EDPT2: Text lines, position	11
1.15	E1EDS01: Summary segment general	12
1.16	IDOC example	13

1. IDOC ORDERS.ORDERS05

1.1 Content

This document describes how purchase orders to Lemvigh Müller are interpreted It is based on the orders.orders05 SAP standard XML IDOC format.

Please note: Lemvigh Müller may extend this document to include new segments and codes without notifying partners if the changes are made according to the XML IDOC standard

In case of any questions please contact Lemvigh Müller A/S

Team: LMe-Integration
Email: edi@lemu.dk
Phone: +45 36 95 52 69

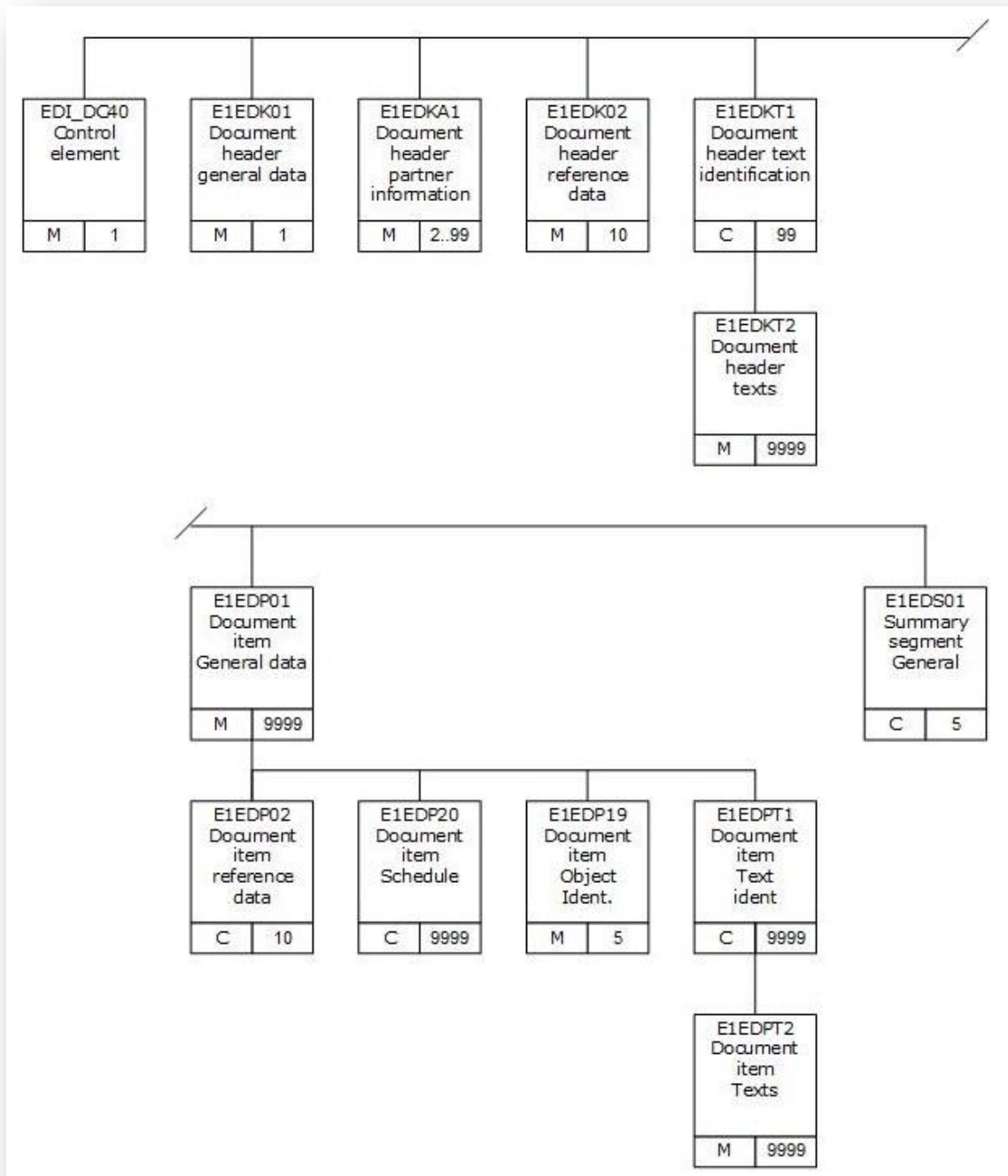
1.2 Document history

Revision	Description	Author	Date
1	Document created	plyk	16 nov 2012

1.3 Document Structure

Only part of the structure is used. Complete documentation can be retrieved using t-code WE60 in your SAP system

To be able to view detailed documentation in WE60 or WE63 please select user options in menu and go to User Options. Check Output Documentation under attributes for IDOC types and save the changes



1.4 EDI_DC40: Control structure

The segment contains the control structure for sender and receiver

The segment is mandatory, not repeated			
Element	Name	Chars	Description
TABNAM	Table name		EDI_DC40
DOCREL	Release/version		Release 702
DIRECT	Direction		1: Outbox
OUTMOD	Output mode		2
IDOCTYP	Basis type		ORDERS05
MESTYP	Message type		ORDER
SNDPOR	Sender port		
SNDPRT	Sender partner type		LS
SNDPRN	Sender partner		Account information
RCVPOR	Receiver port		Partner name
RCVPRT	Receiver partner type		LS
RCVPRN	Receiver partner		Account information
CREDAT	Created data		Date format: yyyyMMdd
CRETIM	Creation time		Time format: HHmmss

XML structure

```

<EDI_DC40 ns0:SEGMENT="1">
  <TABNAM>EDI_DC40</TABNAM>
  <DOCREL>702</DOCREL>
  <DIRECT>1</DIRECT>
  <OUTMOD>2</OUTMOD>
  <IDOCTYP>ORDERS05</IDOCTYP>
  <MESTYP>ORDER</MESTYP>
  <SNDPOR>LEMU.DK</SNDPOR>
  <SNDPRT>LS</SNDPRT>
  <SNDPRN>000007000</SNDPRN >
  <SNDPOR ><partnernavn></SNDPOR>
  <SNDPRT>LS</SNDPRT>
  <SNDPRT>0000123456</SNDPRT>
  <CREDAT>20121130</CREDAT>
  <CRETIM>085717</CRETIM>
</EDI_DC40>

```

1.5 E1EDK01: General data, header

Identification: Sender, receiver and document number

The segment is mandatory, not repeated			
Element	Name	Chars	Description
CURCY	Currency	3	ISO code for the currency (eg DKK for Denmark)
WKURS	Exchange rate	12	1
KUNDENUINR	VAT registration number of buyer	20	12345678
EIGENUINR	LM (Seller) VAT registration number	20	56973311
BELNR	Buyer's PO number	35	

XML structure

```
<E1EDK01 SEGMENT="1">
  <CURCY>DKK</CURCY>
  <WKURS>1</WKURS>
  <EIGENUINR>56973311</EIGENUINR>
  <KUNDENUINR>12345678</KUNDENUINR>
  <BELNR>401234567</BELNR>
</E1EDK01>
```

1.6 E1EDKA1: Partner Information, header

The segment includes unique identifier, reference, name and address for business partners (buyer, delivery address, supplier etc)

The segment is mandatory, from 2 to 99 repetitions			
Element	Name	Chars	Description
PARVW	Partner function	3	Partner role such as buyer, ship to address. Values used AG: Buyer LF: Supplier RE: Invoicee WE: Ship to address
PARTN	Partner	17	Buyers reference, an unique identifier eg ean location
LIFNR	Vendor number at the Partner	17	Identification of the order recipient
NAME1	Name	35	Partner name, max 35 characters per line
NAME2	-	35	
NAME3	-	35	
STRAS	Street and house number	35	Street
ORT01	City	35	City

PSTLZ	Postal Code	9	Zip code
LAND1	Country code	3	ISO country code
TELF1	Phone	25	Phone number, contact at purchasing department or ship to
TELFX	Email	25	Telefax, used for email address
BNAME	Contact	35	Name or department to contact

XML structure

```

<E1EDKA1 SEGMENT="1">
  <PARVW>AG</PARVW>
  <PARTN>000012345</PARTN>
  <LIFNR>0000123450</LIFNR>
  <NAME1>A/S Z.Elektronik Container</NAME1>
  <NAME2></NAME2>
  <NAME3></NAME3>
  <STRAS>Bygvej 14</STRAS>
  <ORT01>Kolding</ORT01>
  <PSTLZ>6000</PSLTZ>
  <LAND1>DKK</LAND1>
  <TELF1>45 36 90 12 34</TELF1>
  <TELFX>purchase@zec.com </TELFX>
  <BNAME>Mads Madsen</BNAME>
</E1EDKA1>

<E1EDKA1 SEGMENT="1">
  <PARVW>LF</PARVW>
  <PARTN>000000028</PARTN>
  <TELF1>3695 4615</TELF1>
  <BNAME>Claus Petersen</BNAME>
</E1EDKA1>

```

1.7 E1EDK02: References, header

Document references

The segment is mandatory, up to 10 repetitions			
Element	Name	Chars	Description
QUALF	Type of reference	3	Qualifiers used 001: Buyers purchase number
BELNR	Document number	35	Buyers PO number
DATUM	Created date	8	Format: yyyyMMdd (year month date)
UZEIT	Created time	6	Format: hhmmss (hour min sec – 24 hour clock)

XML structure

```

<E1EDK02 SEGMENT="1">
  <QUALF>001</QUALF>
  <BELNR>401231234</BELNR>
  <DATUM>20121123</DATUM>
  <UZEIT>231100</UZEIT >
</E1EDK02>

```

1.8 E1EDKT1: Text identification

Purchasing comments (sub segment: E1EDKT2)

Please note: Comments should be minimized to a minimum as these will most likely delay the order processing

The segment is optional, up to 99 repetitions			
Element	Name	Chars	Description
TDID	Text qualifier	4	Qualifiers used F01: General order comment F05: Customer comment F06: Stock/picking comment
TSSPRAS	language		

XML structure

```
<E1EDKT1 SEGMENT="1">
  <TDID>F01</TDID>
  <TSSPRAS >EN</TSSPRAS>
  <E1EDKT2 SEGMENT="1">
</E1EDKT1>
```

1.9 E1EDKT1.E1EDKT2: Text lines, header

Sales note (sub segment to E1EDKT1)

The segment is mandatory, up to 99999999 repetitions			
Element	Name	Chars	Description
TDLINE	Text line	70	
TDFORMAT			

XML structure

```
<E1EDKT2 SEGMENT="1">
  <TDLINE>Indhold af note</TDLINE>
  <TDFORMAT>*</TDFORMAT>
</E1EDKT2>
```

Please note: Use of F01 text lines will stop the order and send it in workflow for manual processing

1.10 E1EDP01: General data, position

Order line (sub segments: E1EDP02, E1EDP03, E1EDP05, E1EDP20, E1EDP19)

The segment is mandatory, up to 9999 repetitions			
Element	Name	Chars	Description
POSEX	Item number	6	Identifying the line in the current document
MENGE	Quantity	15	123456789.12345
MENEE	Unit of measure	3	ISO code
BMNG2	Quantity	15	
PMENE	Price unit of measure	3	ISO code
VPREI	Price (netto)	15	
PEINH	Price unit	9	Number of units of measure on which the price is based
NETWR	Net item value	18	
CURCY	Currency	3	DKK

XML structure

```

<E1EDP01 SEGMENT="1">
  <POSEX>000200</POSEX>
  <MENGE>10</MENGE>
  <MENEE>PCE</MENEE>
  <BMNG2>10</BMNG2>
  <PMENE>PCE</PMENE>
  <VPREI>0000.00</VPREI>
  <PEINH>1</PEINH>
  <NETWR>0000.00</NETWR>
  <CURCY>DKK</CURCY>
  <E1EDP20 SEGMENT="1">
  <E1EDP19 SEGMENT="1">
  <E1EDPT1 SEGMENT="1">
    <E1EDPT2 SEGMENT="1">
</E1EDP01>

```

1.11 E1EDP01.E1EDP20: Delivery, position

Delivery schedule (sub segment for E1EDP01)

The segment is optional, up to 9999 repetitions			
Element	Name	Chars	Description
WMENG	Quantity		Line quantity is used
EDATU	Date		Expected delivery date
EZEIT	Time		Not used

XML structure

```
<E1EDP20 SEGMENT="1">
  <WMENG>10</WMENG>
  <EDATU>20121217</EDATU>
  <EZEIT>1500</EZEIT>
</E1EDP20>
```

1.12 E1EDP01.E1EDP19: Material, position

Material description, references and EAN number

The segment is optional, up to 9999 repetitions			
Element	Name	Chars	Description
QUALF	Qualifier	3	Values used 001: Buyer material number 002: Supplier material number and description 003: EAN number
IDTNR	Material		Material number
KTEXT	Short text		Material description when QUALF eq 002

XML structure

```
<E1EDP19 SEGMENT="1">
  <QUALF>002</QUALF>
  <IDTNR>3356082020</IDTNR>
  <KTEXT>AFFEDTER KEMA MA4000L 5L</KTEXT>
</E1EDP19>
```

1.13 E1EDP01: Text identification, position

Purchasing line comments (sub segment: E1EDKP01)

Please note: Comments should be minimized to a minimum as these will most likely delay the order processing

The segment is optional, up to 99 repetitions			
Element	Name	Chars	Description
TDID	Text qualifier	4	Qualifiers used F01: Line comment internal F02: Line comment F04: Line comment dispatch
TSSPRAS	Language		

XML structure

```
<E1EDP01 SEGMENT="1">
  <TDID>F01</TDID>
  <TSSPRAS >EN</TSSPRAS>
  <E1EDPT2 SEGMENT="1">
</E1EDKT1>
```

1.14 E1EDPT1.E1EDPT2: Text lines, position

Sales note (sub segment to E1EDPT1)

The segment is mandatory, up to 99999999 repetitions			
Element	Name	Chars	Description
TDLINE	Text line	70	
TDFORMAT			

XML structure

```
<E1EDPT2 SEGMENT="1">
  <TDLINE>Indhold af linie note</TDLINE>
  <TDFORMAT>*</TDFORMAT>
</E1EDPT2>
```

Please note: Use of F01 text lines will stop the order and send it in workflow for manual processing

1.15 E1EDS01: Summary segment general

Order totals

The segment is optional, up to 9999 repetitions			
Element	Name	Chars	Description
SUMID	Qualifier	3	Values used 002: Amount
SUMME	Overall	18	Value
SUNIT	Currency	3	DKK

XML structure

```
<E1EDS01 SEGMENT="1">  
  <SUMID>002</SUMID>  
  <SUMME>1220.16</SUMME>  
  <SUNIT>DKK</SUUNIT>  
</E1EDS01>
```

1.16 IDOC example

Full orders.orders05 example

XML structure

```

<ORDERS05>
  <IDOC BEGIN="1">
    <EDI_DC40 SEGMENT="1">
      <TABNAM>EDI_DC40</TABNAM>
      <DOCREL>702</DOCREL>
      <DIRECT>1</DIRECT>
      <OUTMOD>2</OUTMOD>
      <IDOCTYP>ORDERS05</IDOCTYP>
      <MESTYP>ORDER</MESTYP>
      <SNDPOR>LEMU.DK</SNDPOR>
      <SNDPRT>LS</SNDPRT>
      <SNDPRN>000007000</SNDPRN >
      <SNDPOR>partnernavn</SNDPOR>
      <SNDPRT>LS</SNDPRT>
      <SNDPRT>0000123456</SNDPRT>
      <CREDAT>20121130</CREDAT>
      <CRETIM>085717</CRETIM>
    </EDI_DC40>
    <E1EDK01 SEGMENT="1">
      <CURCY>DKK</CURCY>
      <WKURS>1</WKURS>
      <EIGENUINR>56973311</EIGENUINR>
      <KUNDENUINR>12345678</KUNDENUINR>
      <BELNR>401234567</BELNR>
    </E1EDK01>
    <E1EDKA1 SEGMENT="1">
      <PARVW>AG</PARVW>
      <PARTN>000012345</PARTN>
      <LIFNR>0000123450</LIFNR>
      <NAME1>A/S Z.Elektronik Container</NAME1>
      <NAME2></NAME2>
      <NAME3></NAME3>
      <STRAS>Bygvej 14</STRAS>
      <ORT01>Kolding</ORT01>
      <PSTLZ>6000</PSTLZ>
      <LAND1>DKK</LAND1>
      <TELF1>45 3690 1234</TELF1>
      <TELFX>purchase@zec.com </TELFX>
      <BNAME>Mads Madsen</BNAME>
    </E1EDKA1>
    <E1EDKA1 SEGMENT="1">
      <PARVW>LF</PARVW>
      <PARTN>000000028</PARTN>
      <TELF1>3695 4615</TELF1>
      <SPRAS>K</SPRAS>
      <BNAME>Claus Petersen</BNAME>
      <SPRAS_ISO>DA</SPRAS_ISO>
    </E1EDKA1>
    <E1EDKA1 SEGMENT="1">
      <PARVW>WE</PARVW>
      <PARTN>000012345</PARTN>
      <LIFNR>11</LIFNR>
      <NAME1>Niels Madsen</NAME1>
      <NAME2></NAME2>
      <NAME3></NAME3>
      <STRAS>Bygvej 14</STRAS>
      <ORT01>Kolding</ORT01>
      <PSTLZ>6000</PSTLZ>
      <LAND1>DK</LAND1>
      <TELF1>45 3690 1234</TELF1>
      <SPRAS>K</SPRAS>
      <SPRAS_ISO>DA</SPRAS_ISO>
  </IDOC BEGIN="1">

```

```

</E1EDKA1>
<E1EDK02 SEGMENT="1">
  <QUALF>001</QUALF>
  <BELNR>401231234</BELNR>
  <DATUM>20121123</DATUM>
  <UZEIT>231100</UZEIT >
</E1EDK02>
<E1EDKT1 SEGMENT="1">
  <TDID>F01</TDID>
  <TSSPRAS >EN</TSSPRAS>
  <E1EDKT2 SEGMENT="1">
    <TDLINE>Indhold af note</TDLINE>
    <TDFORMAT>*</TDFORMAT>
  </E1EDKT2>
</E1EDKT1>
<E1EDP01 SEGMENT="1">
  <POSEX>000200</POSEX>
  <MENGE>10</MENGE>
  <MENEE>PCE</MENEE>
  <BMNG2>10</BMNG2>
  <PMENE>PCE</PMENE>
  <VPREI>0000.00</VPREI>
  <PEINH>1</PEINH>
  <NETWR>0000.00</NETWR>
  <CURCY>DKK</CURCY>
  <E1EDP20 SEGMENT="1">
    <WMENG>10</WMENG>
    <EDATU>20121217</EDATU>
    <EZEIT>1500</EZEIT>
  </E1EDP20>
  <E1EDP19 SEGMENT="1">
    <QUALF>002</QUALF>
    <IDTNR>3356082020</IDTNR>
    <KTEXT>AFFEDTER KEMA MA4000L 5L</KTEXT>
  </E1EDP19>
  <E1EDP01 SEGMENT="1">
    <TDID>F01</TDID>
    <TSSPRAS >EN</TSSPRAS>
    <E1EDPT2 SEGMENT="1">
      <TDLINE>Indhold af linie note</TDLINE>
      <TDFORMAT>*</TDFORMAT>
    </E1EDPT2>
  </E1EDP01>
</E1EDP01>
<E1EDS01 SEGMENT="1">
  <SUMID>002</SUMID>
  <SUMME>1220.16</SUMME>
  <SUNIT>DKK</SUNIT>
</E1EDS01>
</IDOC>
</ORDERS05>

```